

# THE ORIGINAL 'JOINTLESS' RUBBER TRACK

ADVANCED PREMIUM RUBBER COMPOUND FOR  
INCREASED PERFORMANCE AND DURABILITY

**EXCAVATORS • SKIDSTEERS • ASV'S • PAVERS  
LOADERS • CRAWLERS TENCHERS**



# WHY CHOOSE GTW?

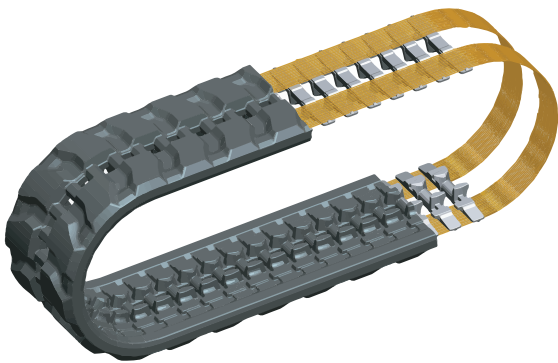
## GTW IS A TRACK PIONEER

THE 'P' TRACK IS THE ORIGINAL  
'JOINTLESS' RUBBER TRACK

### CABLE QUANTITY AND POSITIONING

GTW tracks have continuously-wound cables right up to the edge.

Uniform placement for added strength.



### PREMIUM CABLE SYSTEM

Higher strand count for increased tensile strength.

EXCAVATORS • SKIDSTEERS • ASV'S • PAVERS

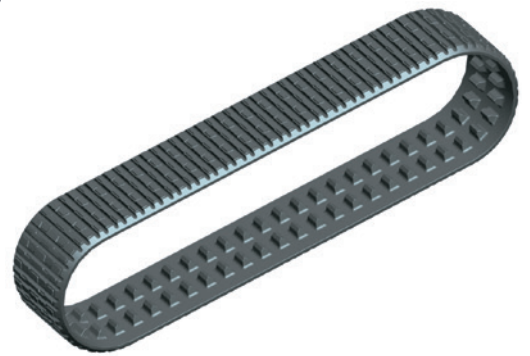






## PREMIUM RUBBER

Premium natural rubber formulation provides enhanced track durability and performance.

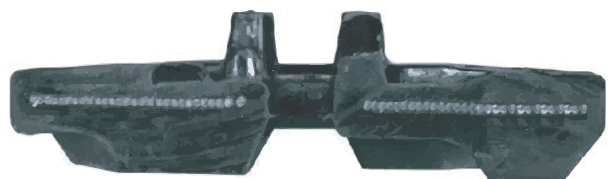


## O.E.M. TRACK SUPPLIER

Our tracks are engineered for thousands of brand new machines for some/a few notorious machine manufacturers.

## THE BEST PINS ON THE MARKET

The only major manufacturer using higher-grade pins for increased track strength.

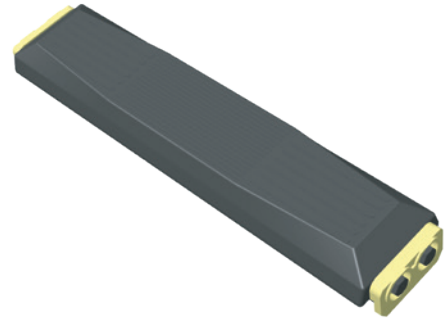




REINFORCED RUBBER TRACK PADS

## CLIP-ON STYLE

Clip-on pads are perfect for maximizing machine flexibility, minimizing vibration, and reducing ground-disturbance.

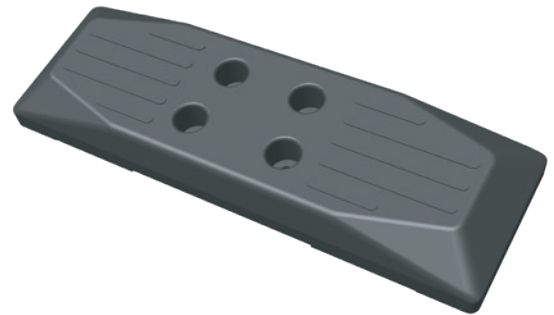


## BOLT-ON STYLE

Extremely robust bolt-on fit to the tracks prevents movement of the pads.

## CHAIN-ON STYLE

One-piece vulcanized pads that bolt directly on to the steel track chain.



**FROM 200MM TO 800MM**  
PADS FOR THE MAJORITY OF MACHINES

**ENGINEERED FOR THE CONSTRUCTION INDUSTRY**



+49 (0)9101 906 77 00

europa@globaltrackwarehouse.eu



**WWW.GLOBALTRACKWAREHOUSE.EU**