



# PREMIUM AGRICULTURAL RUBBER TRACKS AND MID-ROLLERS

TRACTORS • COMBINES • GRAIN CARTS



# TANK TUFF<sup>®</sup>

PREMIUM AGRICULTURAL RUBBER TRACKS



## One-Step Vulcanization

All TankTuff tracks are vulcanized with our one-step process. This ensures that there is no weak point where the tread bars and drive lugs bond to the track.

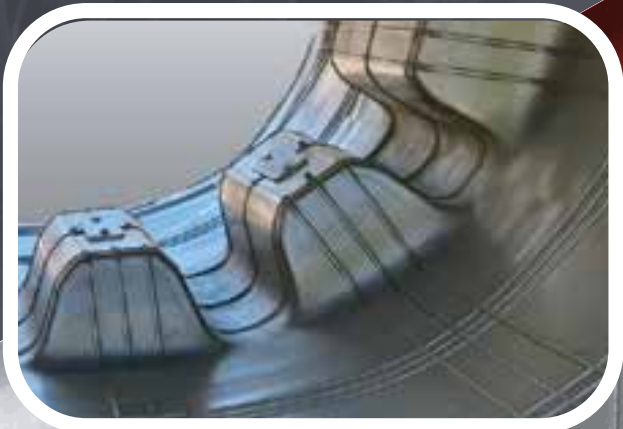
## Stronger Tread Bars

Our specially designed tread-bars, natural rubber compounds and one-step vulcanization process results in the strongest and most durable tread bars available.



## Reinforced Drive Lugs

The combination of the one-step process and our armor strengthened lug system ensures your tread lugs do not tear and are less prone to wear than the competition.



## Premium Natural Rubber Compounds

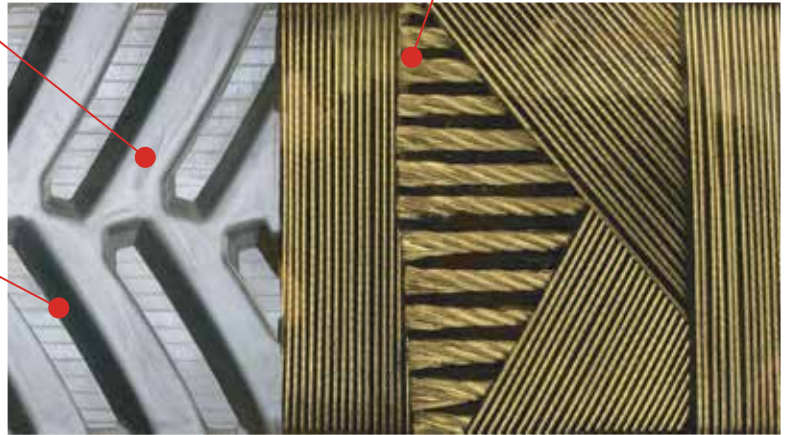
TankTuff uses only premium quality materials and solutions resulting in a rubber track with significant durability.

## Strongest Cable System

Up to 6.5mm High Tensile Main Cable, four additional steel cable layers plus two additional fabric layers enables TankTuff to achieve remarkable strength.

## Specially Designed Tread Bars

Our tread bars are designed to increase traction and clean out while reducing ground disturbance and vibration.



**Our TankTuff Mid-Rollers are now available for a wide range of machines.**

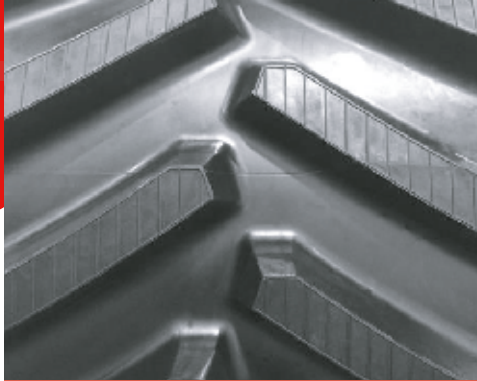
- New Mid-Rollers
- No Core Exchange
- Injection Molded
- Heat Resistant
- Natural Rubber
- Extend Track Life



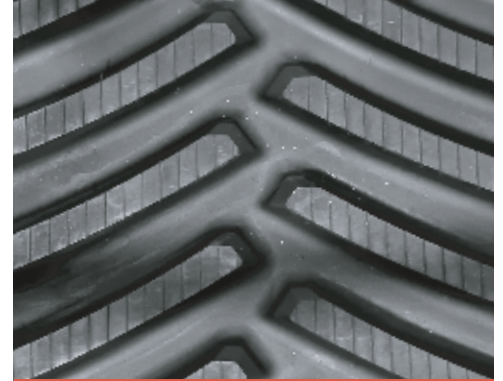
# POPULAR SIZES & TREAD PATTERNS



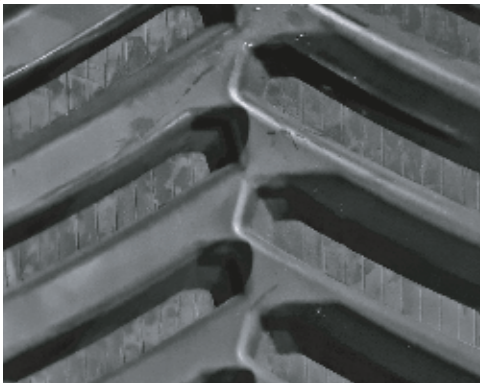
**30"** JOHN DEERE 8RT



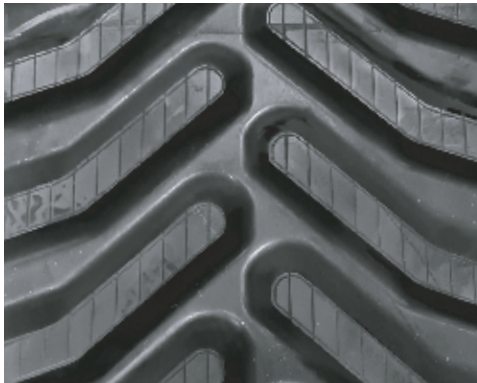
**30"** JOHN DEERE 9000T



**36"** JOHN DEERE 9RX



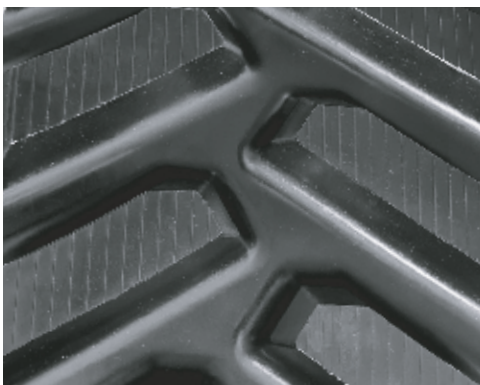
**24"** CHALLENGER  
35/34/55



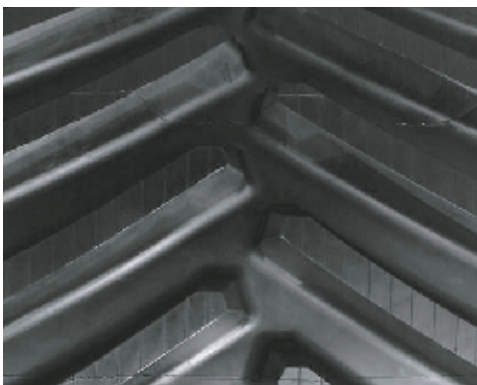
**24"** CHALLENGER  
MT700



**30"** CHALLENGER  
MT800



**18"** CASE ROWCROP



**30"** CASE QUADTRAC



**35"** CLAAS



MANUFACTURED FOR  
A WIDE RANGE OF  
MACHINES

 **TANK TUFF**®

+49 (0) 9101 906 77 00  
[EUROPE@GLOBALTRACKWAREHOUSE.EU](mailto:EUROPE@GLOBALTRACKWAREHOUSE.EU)